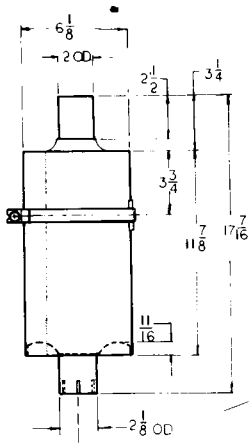
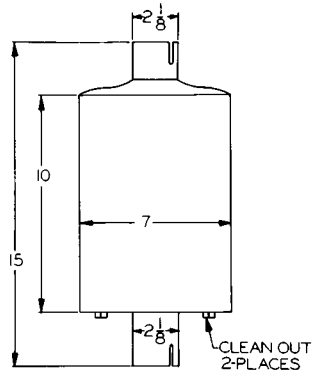


TECK

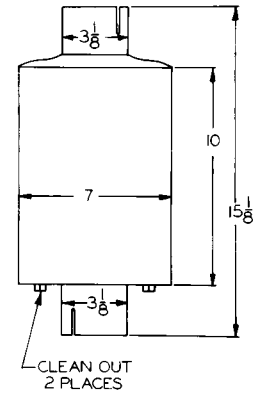
TECK



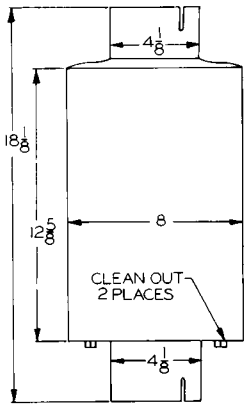
1-6250C



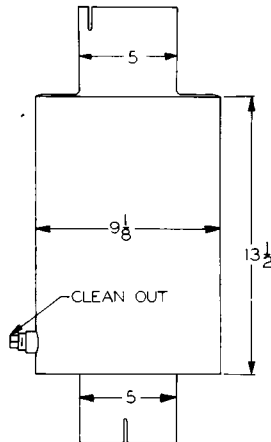
SS-860-2



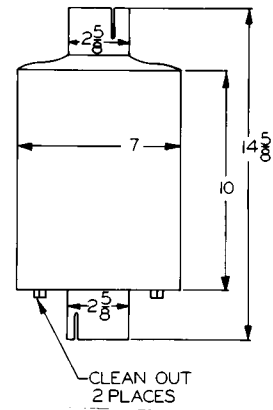
SS-860-3



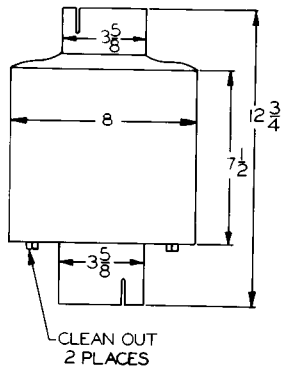
SS-860-4A



SS-860-5

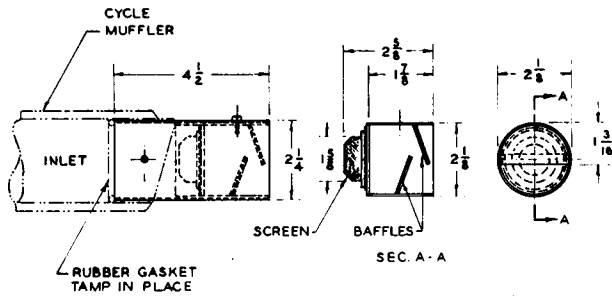


SS-860-25

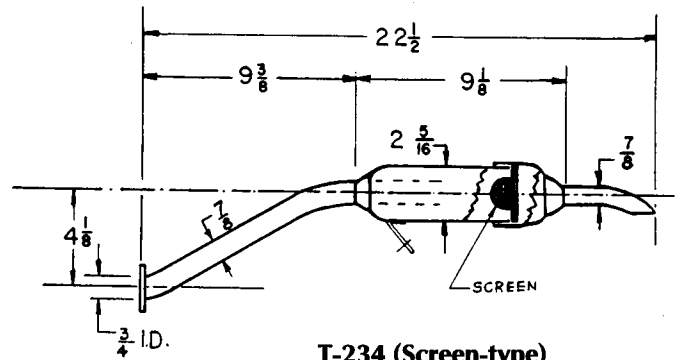


SS-860-35

TILLERY

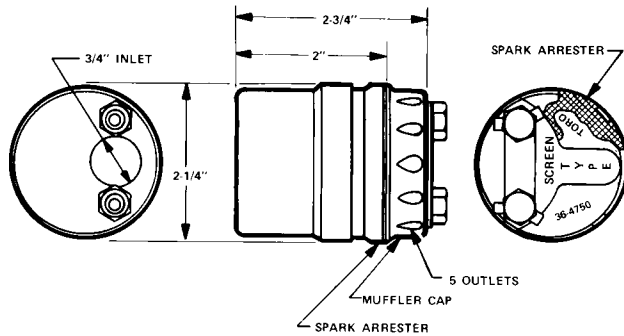


T-134 (Screen-type)

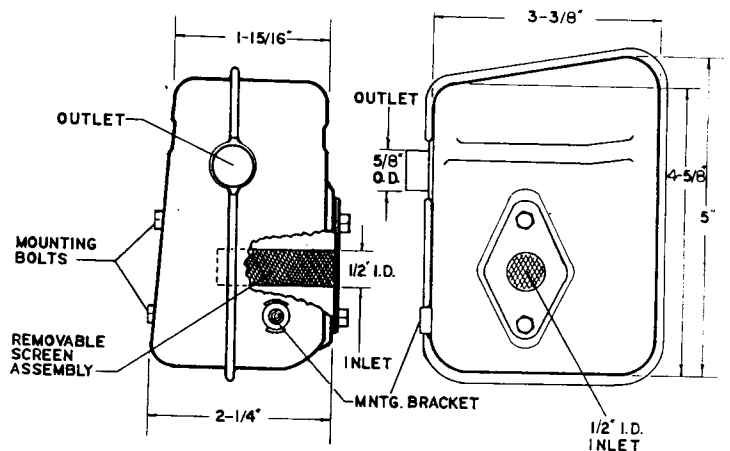


T-234 (Screen-type)

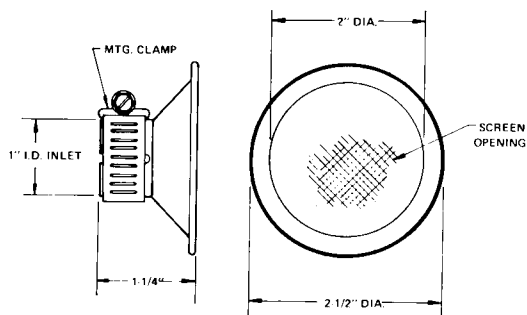
TORO



36-4750

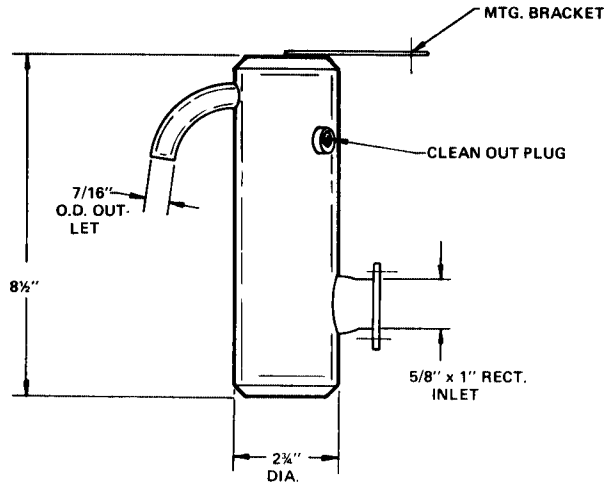


56-6730



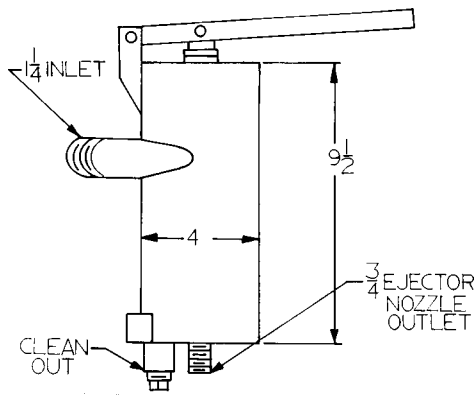
81-0200

WACKER

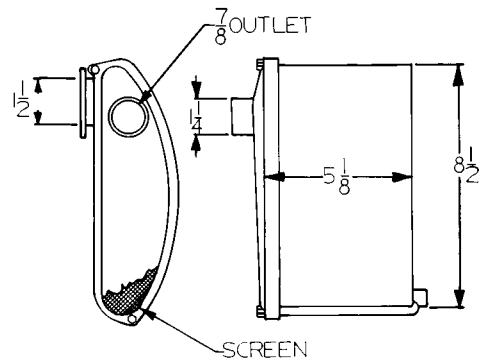


58406

WAJAX-PACIFIC



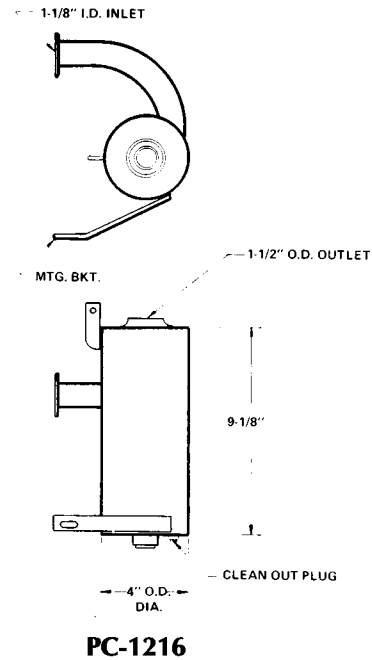
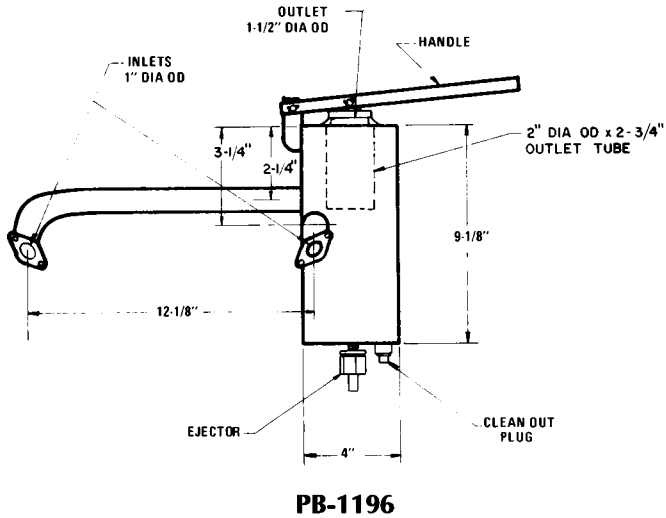
D-4479



MODEL 2

WAJAX-PACIFIC/WALKER WASHINGTON IRON WORKS

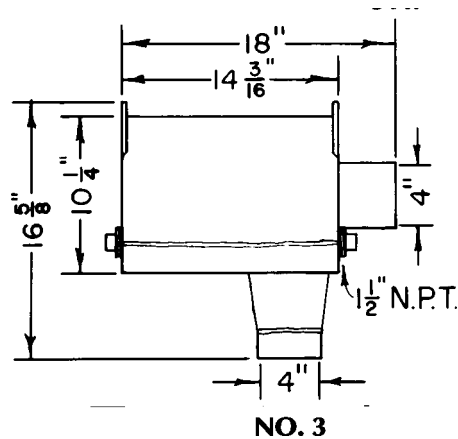
WAJAX-PACIFIC (continued)



WALKER

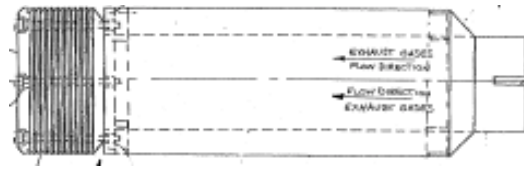
For Soundmaster & Walker 21578 See Donaldson FCM06-0037 or Nelson 49120
 For Soundmaster & Walker 21579 See Donaldson FCM06-5030 or Nelson 49125
 For Soundmaster & Walker 21580 See Donaldson FCM07-0068 or Nelson 49130
 For Soundmaster & Walker 21581 See Donaldson FCM07-0069 or Nelson 49135
 For Soundmaster & Walker 21582 See Donaldson FCM08-0024 or Nelson 49140
 For Soundmaster & Walker 21584 See Donaldson FCM09-0091 or Nelson 49150
 For Soundmaster & Walker 21585 See Nelson T-12825F
 For Soundmaster & Walker 22005 See Donaldson FCM100-0016
 For Soundmaster & Walker 35807 See Donaldson FCM06-0037 or Nelson 49115

WASHINGTON IRON WORKS



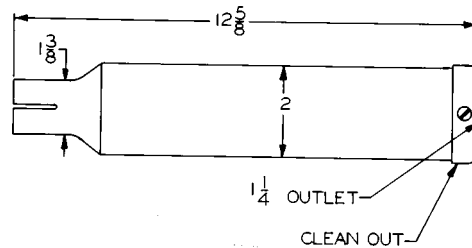
WHITE BROTHERS WINTEC/XDUCER/YAMAHA

WHITE BROTHERS



E-Series 2000

WINTEC



WINTec 500

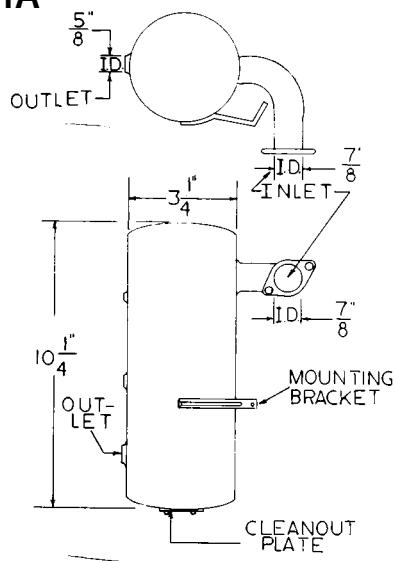
XDUCER

SEE SUPER-TRAPP

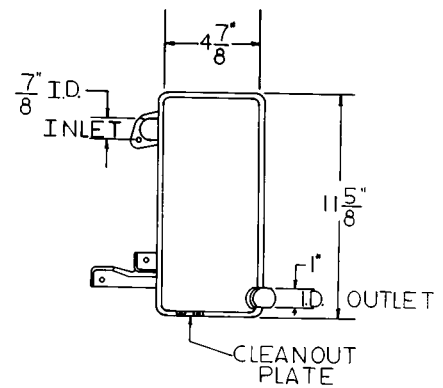
Xducer II—Modified XDUCER X-100

XDUCER X-100—See Super Trapp for drawing

YAMAHA



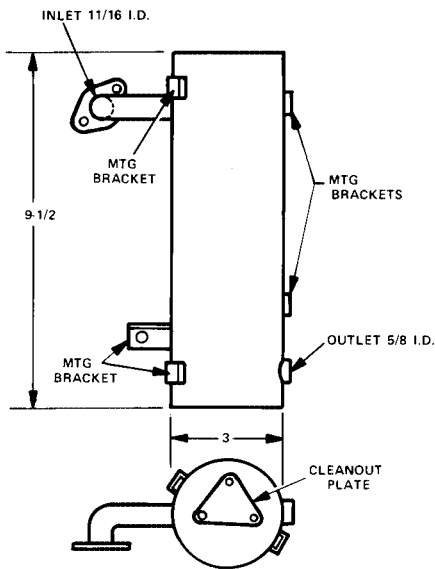
EG 100A&B



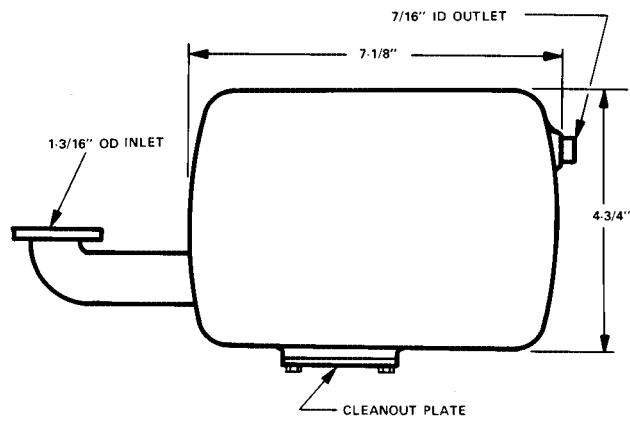
EG 102A&B

YAMAHA

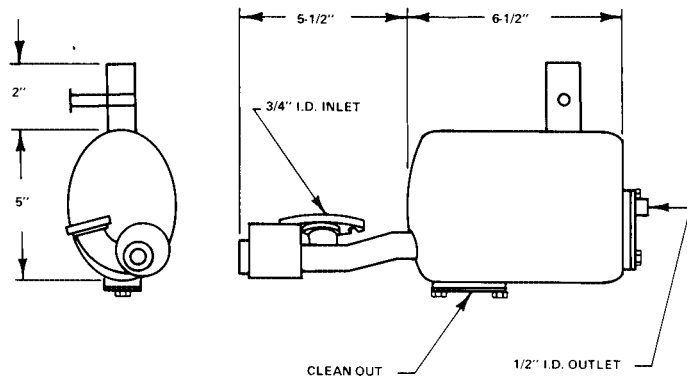
YAMAHA (continued)



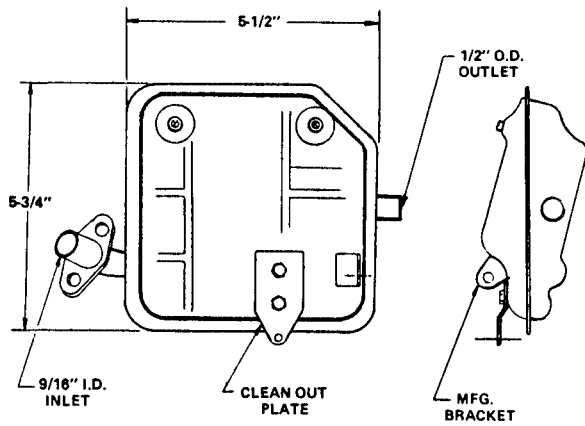
EG103A&B



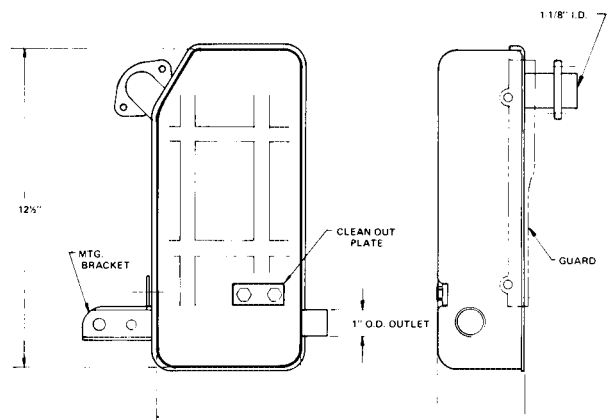
104A&B



EG 105A

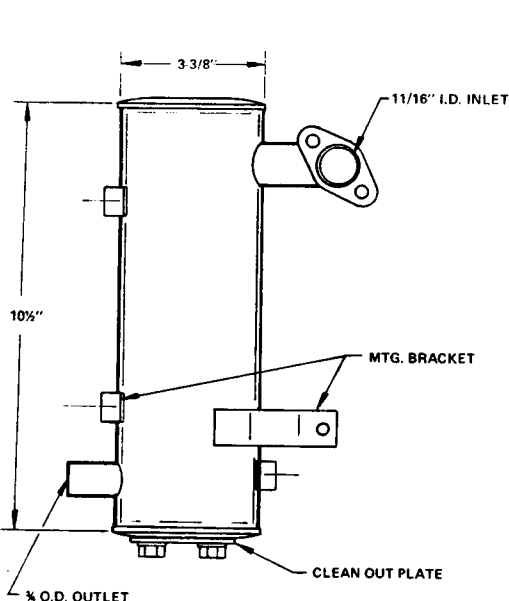


EG 106

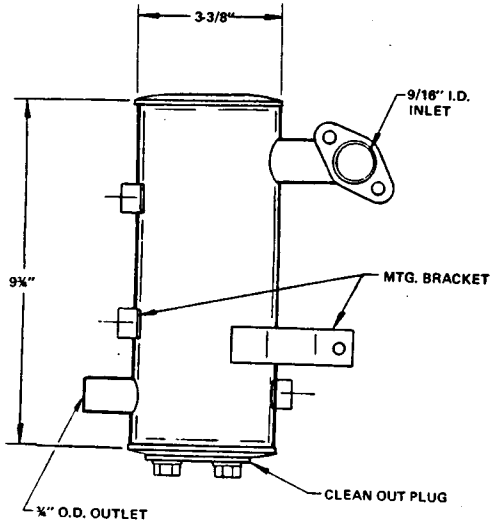


EG 107

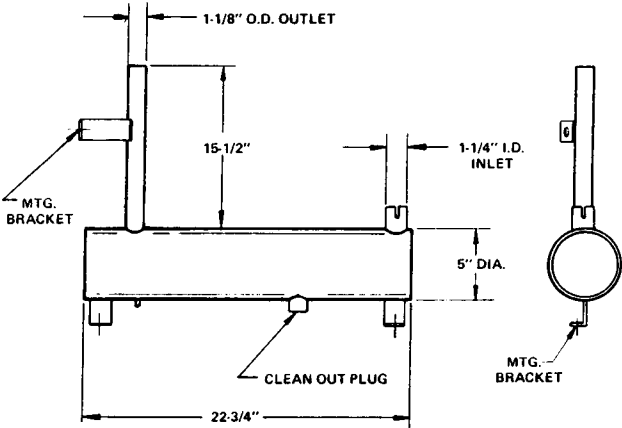
YAMAHA (continued)



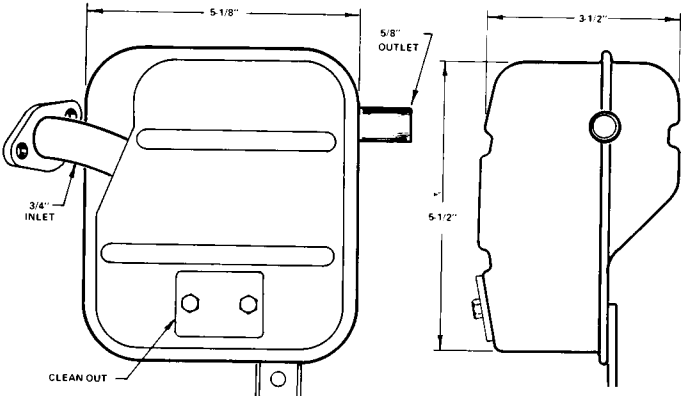
EG 108



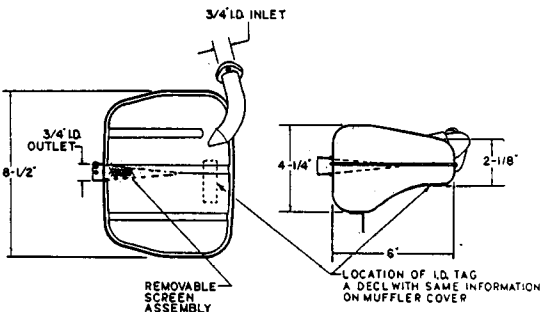
EG 109



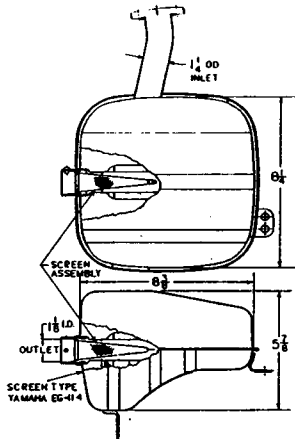
EG 110



EG 111



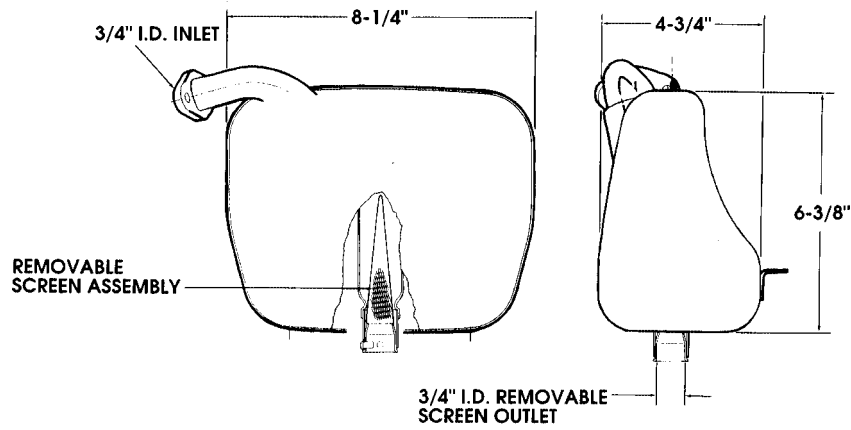
EG 113



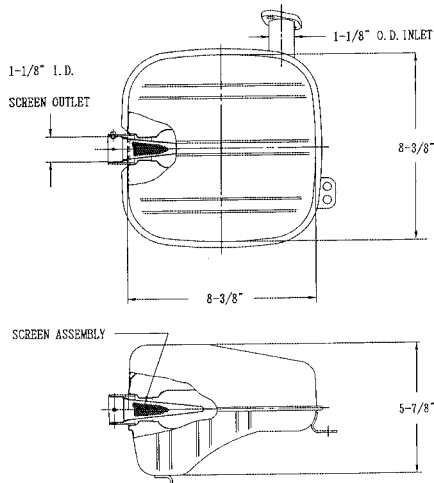
EG 114

YAMAHA

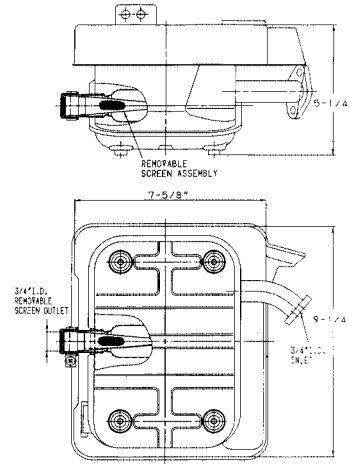
YAMAHA (continued)



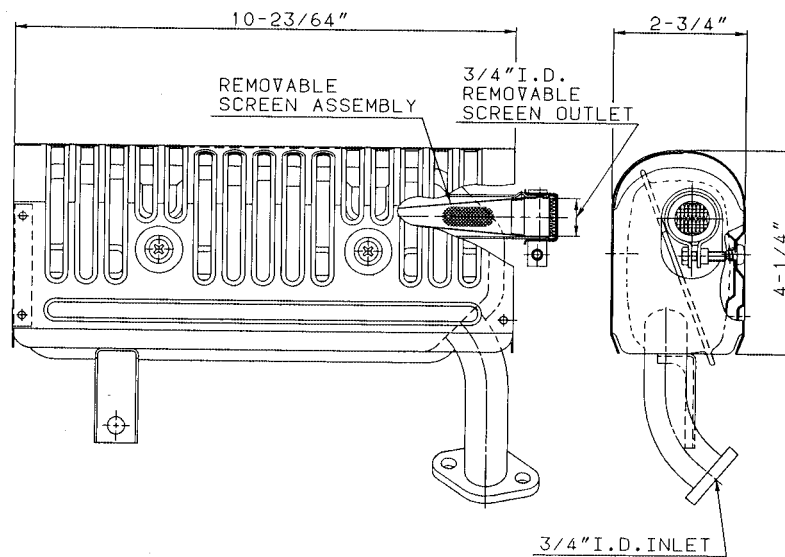
EG-116



EG-117A

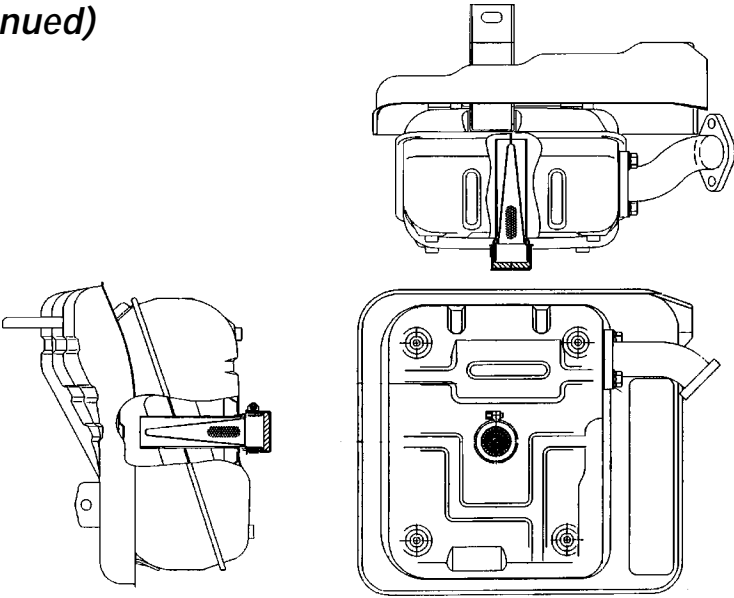


EG-118

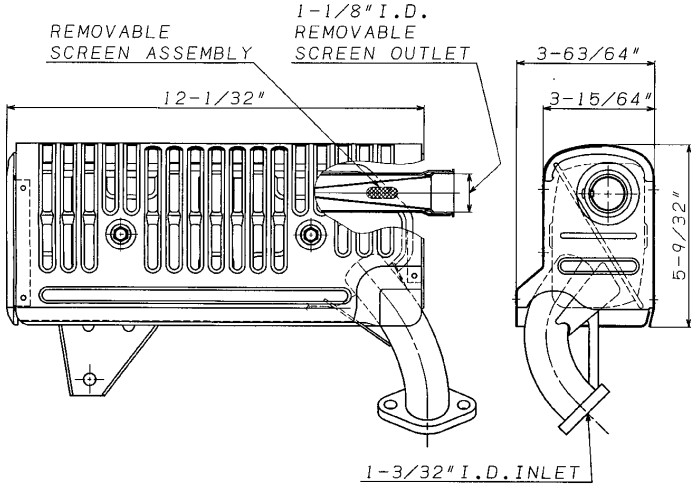


EG-119

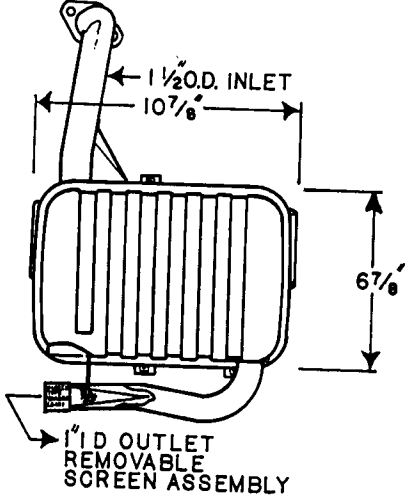
YAMAHA (continued)



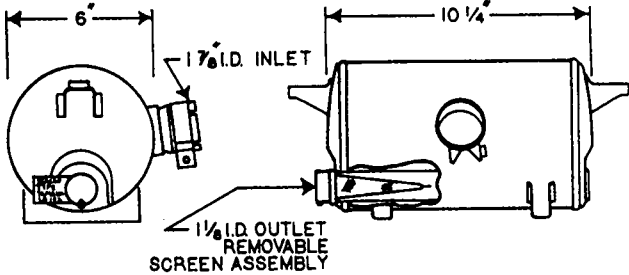
EG-120



EG-122



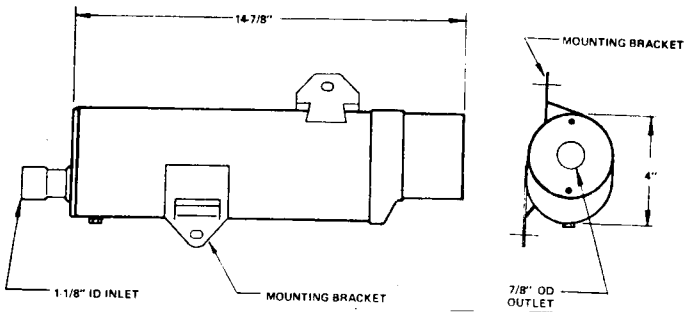
LG 101



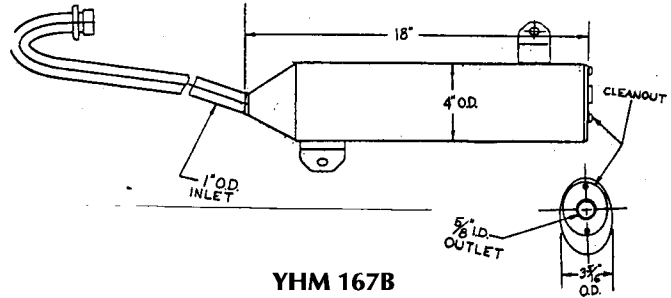
LG 102

YAMAHA

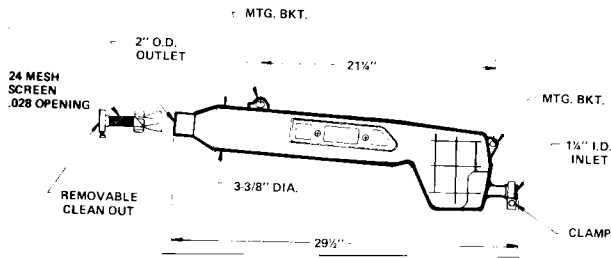
YAMAHA (continued)



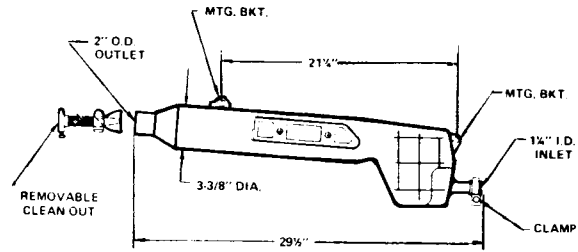
YHM 167A



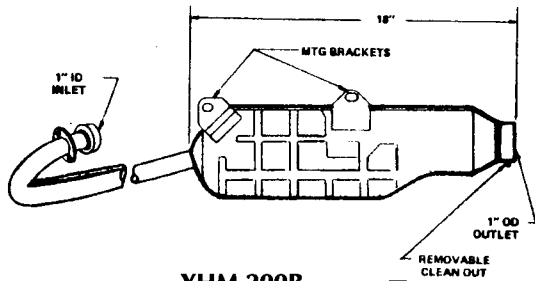
YHM 167B



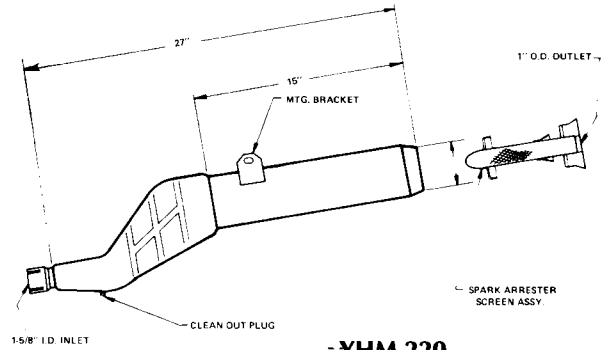
YHM 200



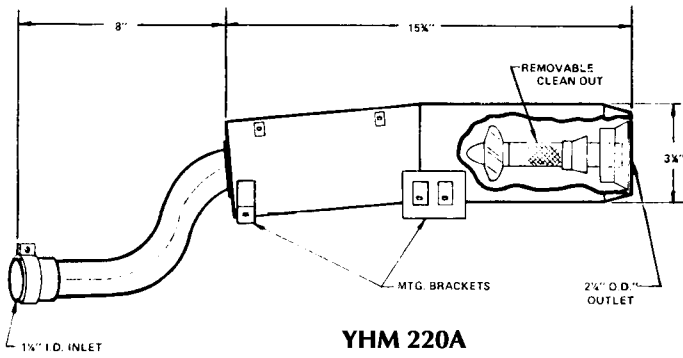
YHM 200A



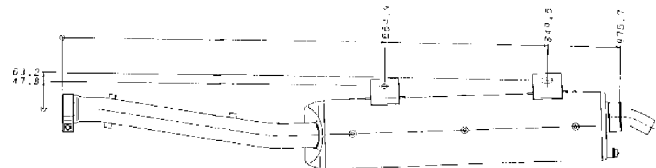
YHM 200B



YHM 220

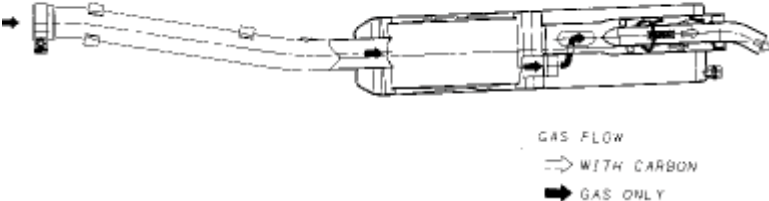


YHM 220A

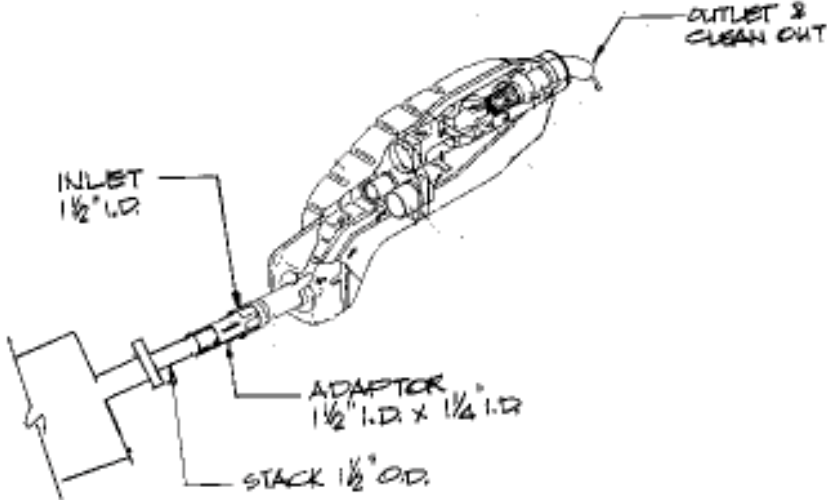


238F

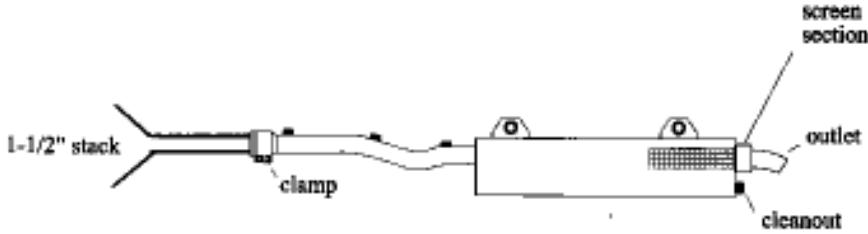
YAMAHA (continued)



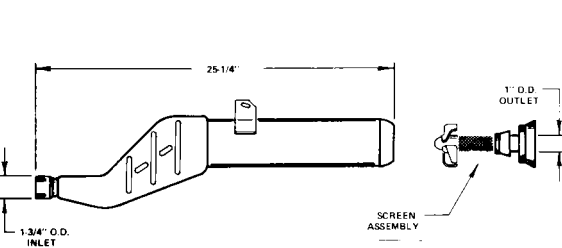
YHM 238G



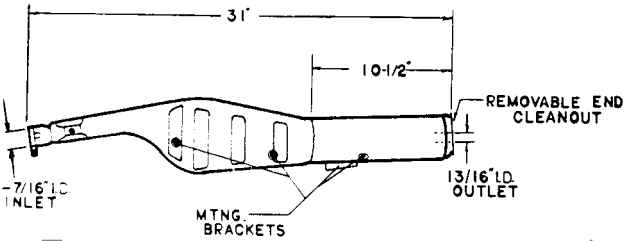
YHM 270A



YHM 270B



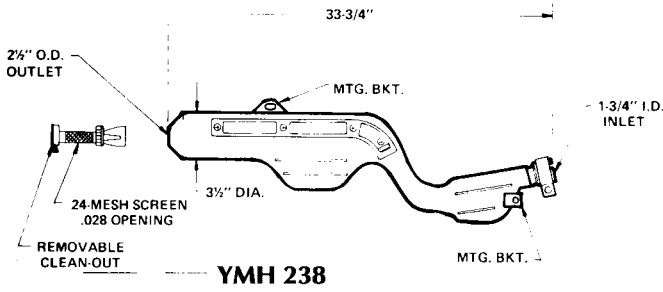
YMH 220B



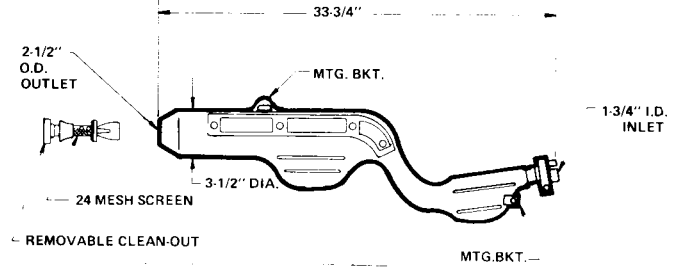
YMH 220C

YAMAHA-KRIZMAN

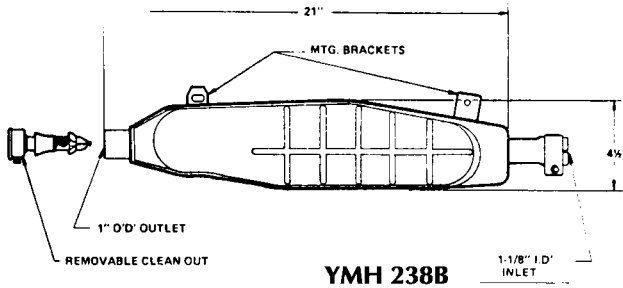
YAMAHA-KRIZMAN



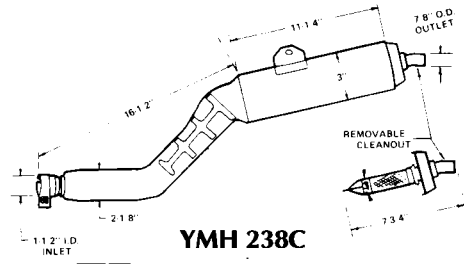
YMH 238



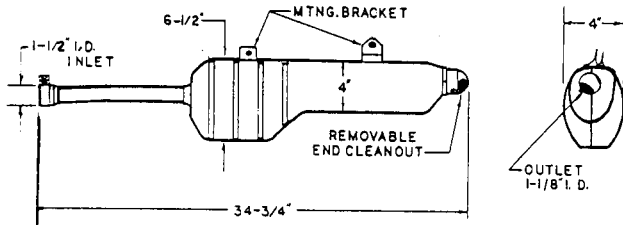
YMH 238A



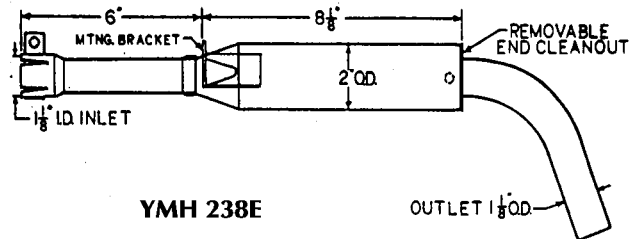
YMH 238B



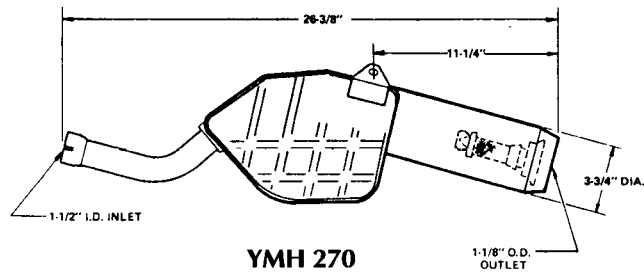
YMH 238C



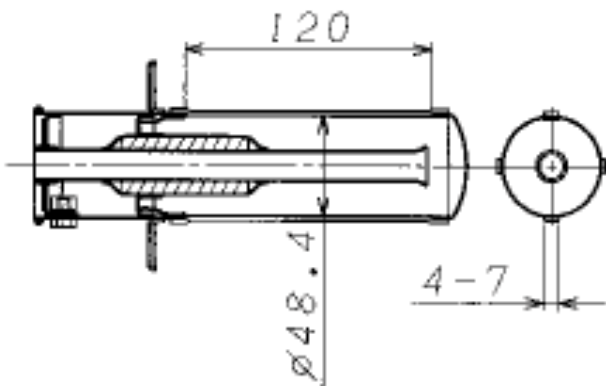
YMH 238D



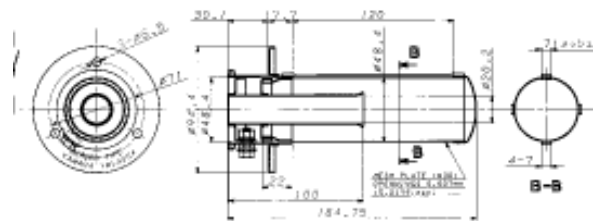
YMH 238E



YMH 270

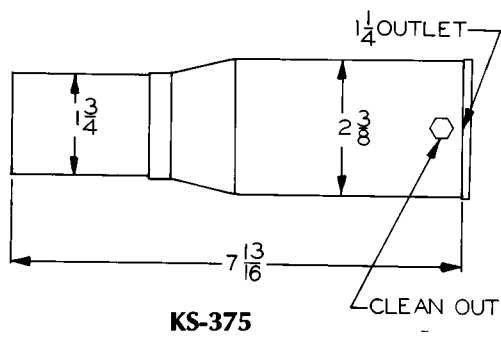
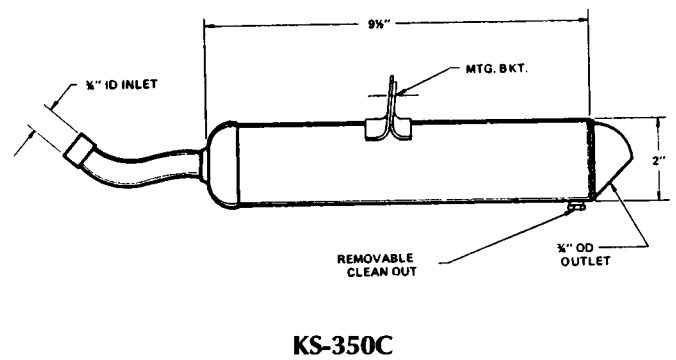
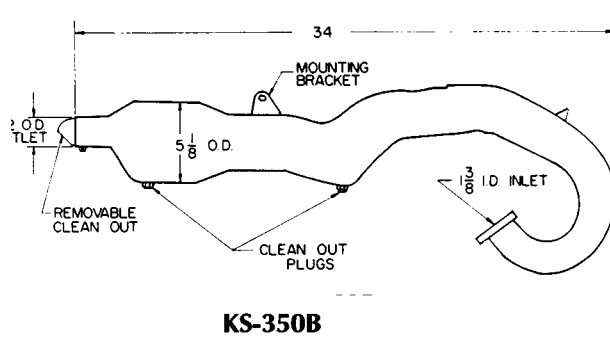
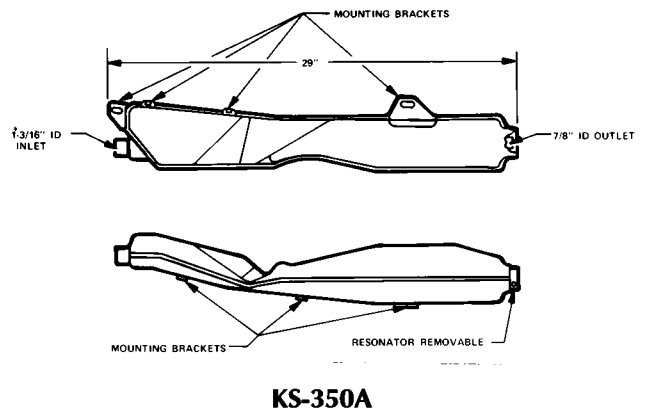
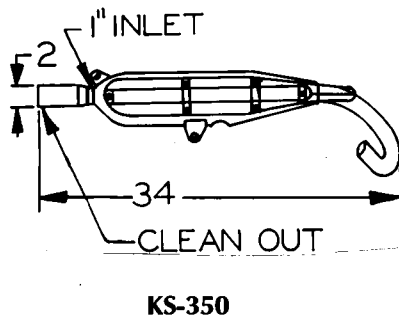
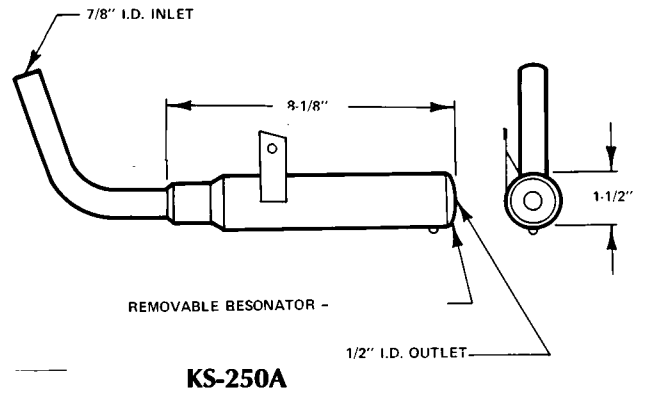
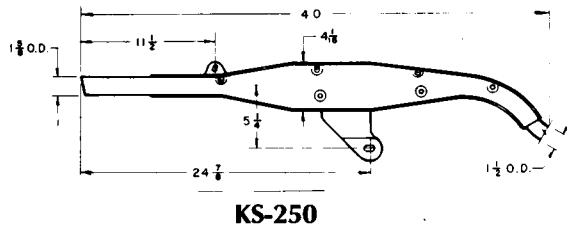


YMS 400



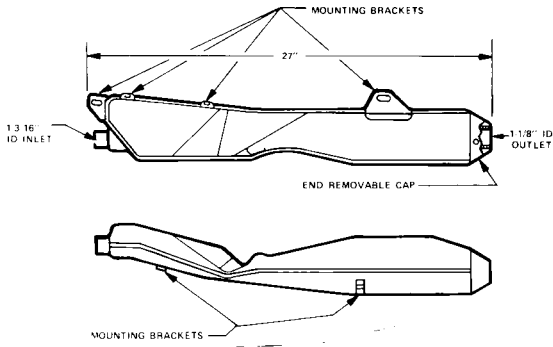
YMS 400A

YAMAHA-KRIZMAN

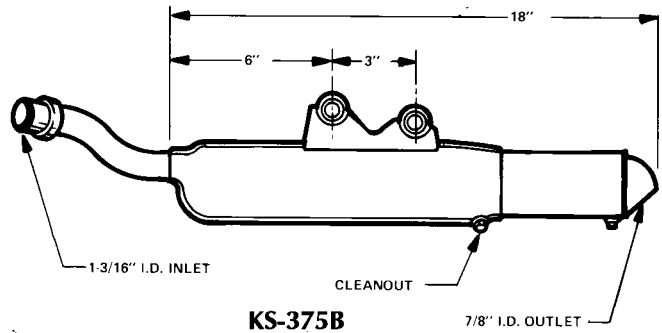


YAMAHA-KRIZMAN

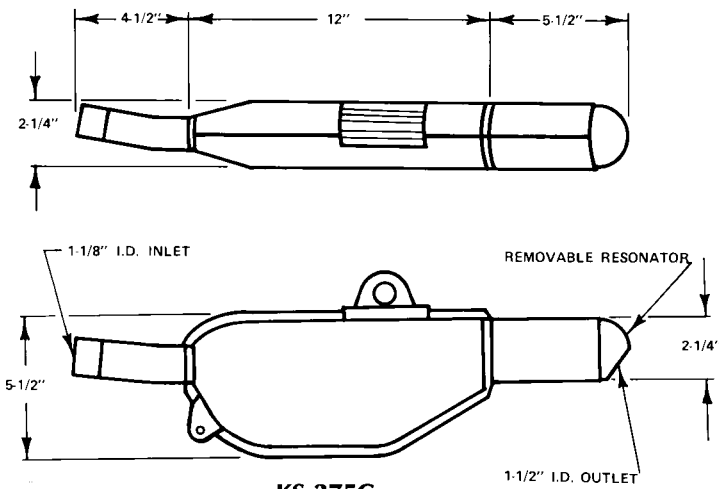
YAMAHA-KRIZMAN (continued)



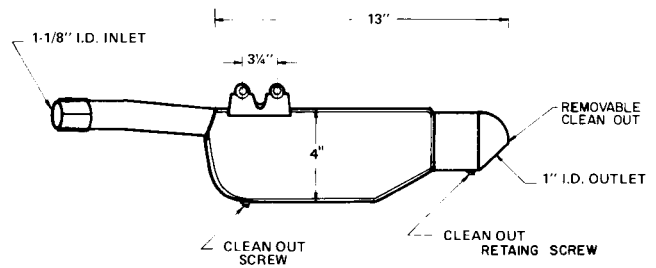
KS-375A



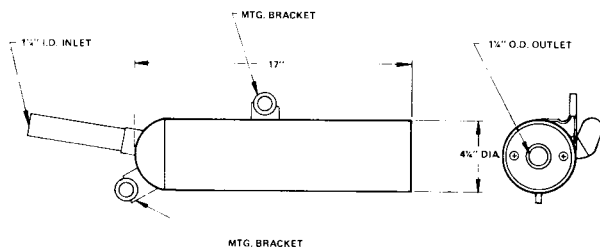
KS-375B



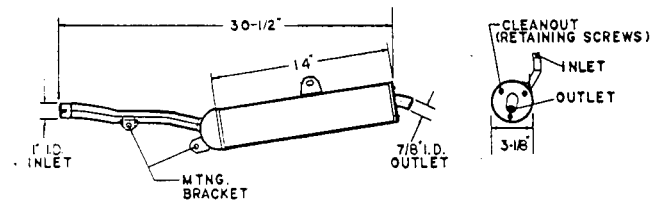
KS-375C



KS-375D

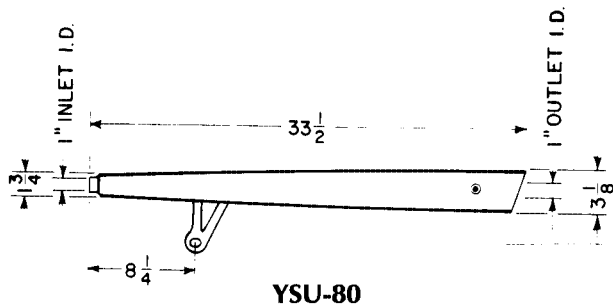
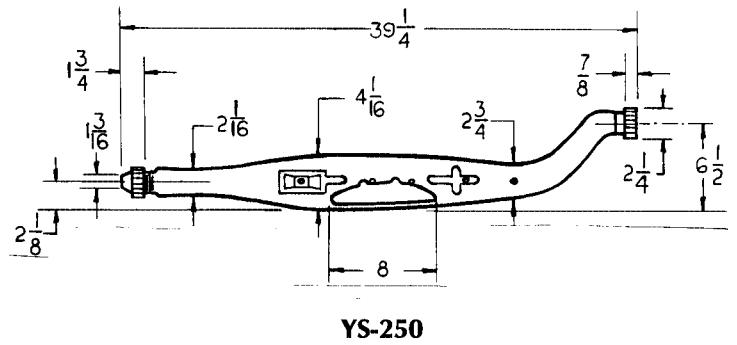
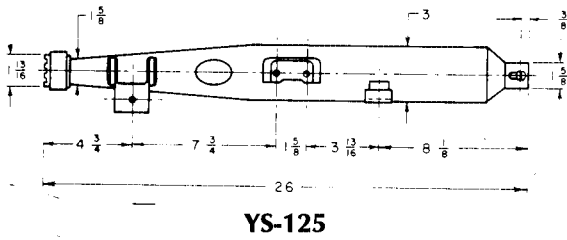
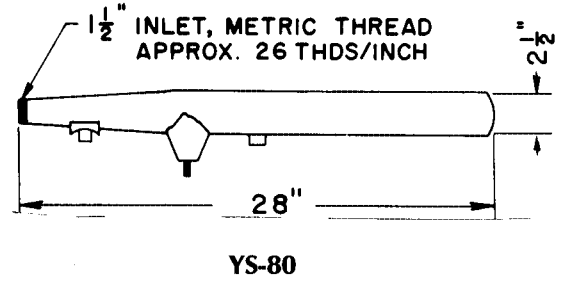
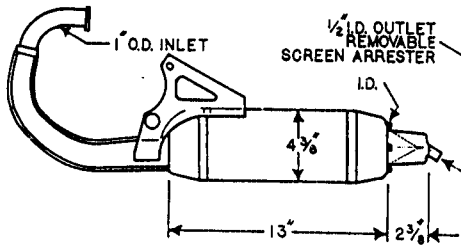
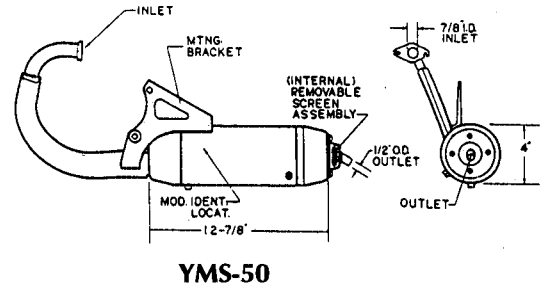
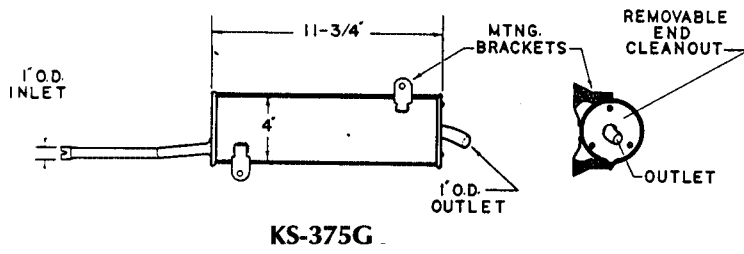


KS-375E



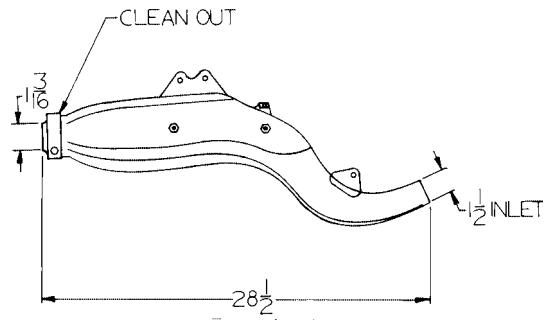
KS-375F

YAMAHA-KRIZMAN (continued)



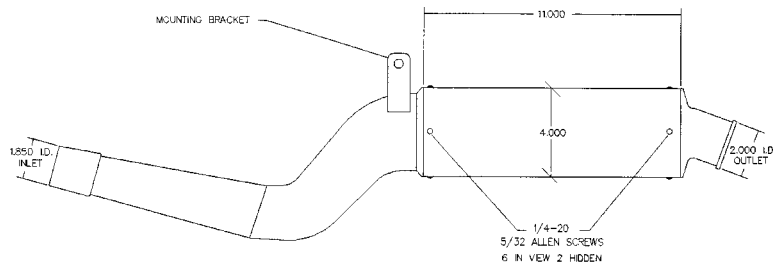
YAMAHA-SKYWAY YOSHIMURA/YUBA

YAMAHA-SKYWAY



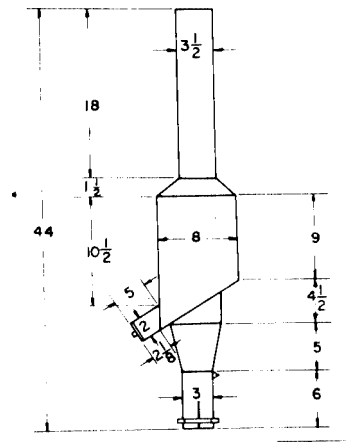
SERIES 300 MODEL 520

YOSHIMURA



YRD-1Q, YRD-2L

YUBA



8000